

# Top View Type LED [ PLCC6 ]

# SMD-K50

## 機械性質

尺寸 : 5.4 x 5.0 x 2.8 (mm)

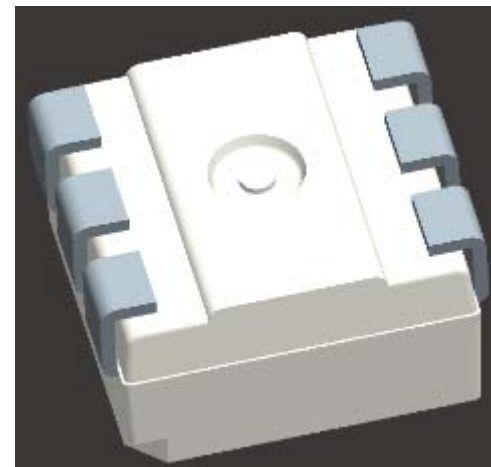
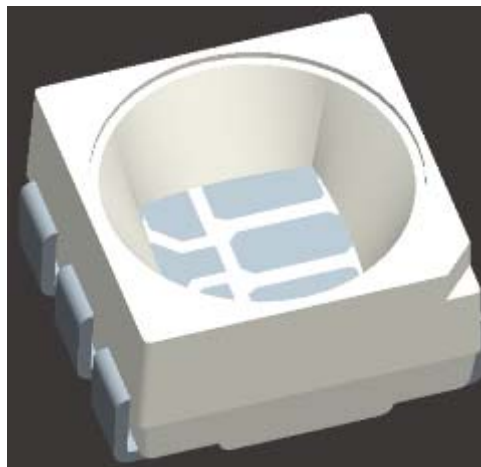
料片尺寸 : 144.0[L] x 60.0[W] x 0.20[T] (mm)

單片顆數 : 120 Pcs

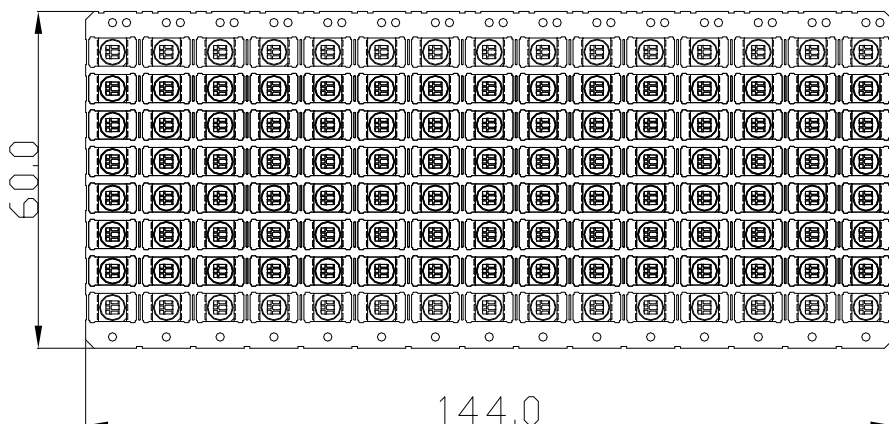
Chip size: 15\*15(RGB)&(白光)

## 產品應用

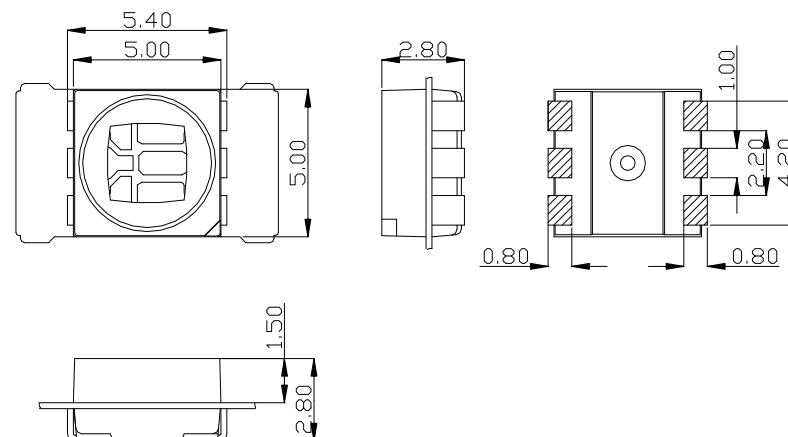
戶外顯示屏



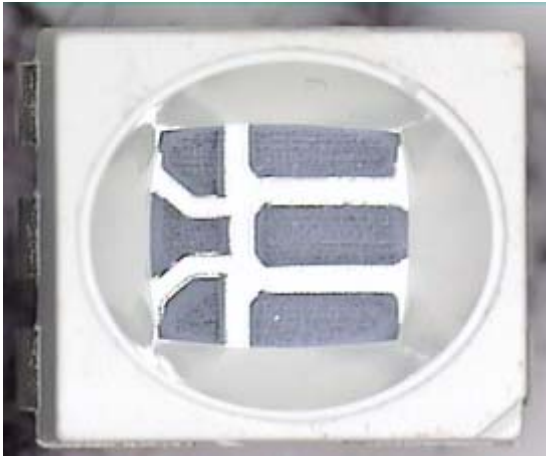
## LAYOUT



## 機械尺寸



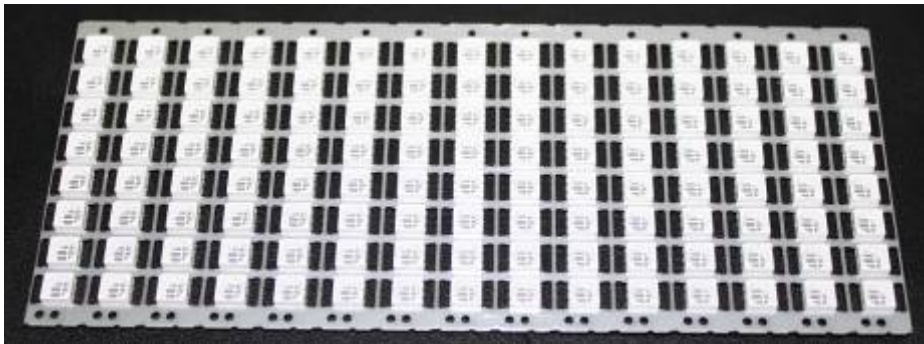
單體正面



單體背面



單片正面



單片背面

